



European Research Infrastructures for Societal Challenge 1



Jean-Emmanuel Faure

**Policy Officer
Innovative and Personalised Medicine Unit
DG Research & Innovation
European Commission**

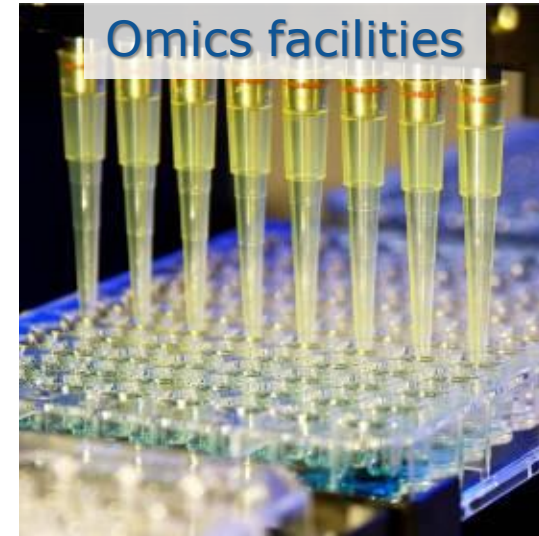
Imaging facilities



Biological Resource Centres



Omics facilities



Bioinformatics resources

L	D	V	E	Q	L	G	I	P	E	Q	E	Y	S	C	V	V	K	M	P	S	G	E	F	A	R	I	C	R	D	L	S	H	I	G	D	A	V	V	I	HsPCNA
L	D	Q	E	H	L	G	I	P	E	T	D	F	S	C	V	V	R	M	P	A	M	E	F	A	R	I	C	R	D	L	A	Q	F	S	E	S	V	V	I	DmPCNA
I	D	A	D	F	L	K	I	E	E	L	Q	Y	D	S	T	L	S	L	P	S	S	E	F	S	K	I	V	R	D	L	S	Q	L	S	D	S	I	N	I	ScPCNA



Large-scale facilities

Research Infrastructures are **facilities, resources and services** used by the research communities to conduct research and foster innovation, e.g. major scientific equipments, knowledge-based resources, e-infrastructures

Usage of research infrastructures for the H2020 Societal Challenge 1

- The "Health, demographic change and well-being" Work Programme **encourages the use of existing research infrastructures** (including e-infrastructures), when appropriate.
 - Participation in projects
 - Access costs
- Projects submitting a **Data Management Plan** are invited to identify the existing European research **data infrastructures** that may be used and how these may be mobilised, in particular for long-term data curation and preservation.

The European Research Infrastructures landscape

- **Intergovernmental Research Infrastructures.** Well established Research Infrastructures supported by the Member States.
- **New Pan-European Research Infrastructures.** Research Infrastructures identified on the roadmap of the European Strategy Forum on Research Infrastructures (ESFRI).
- **National Research Infrastructures.** Several networks of national and regional Research Infrastructures open to all European researcher from both academia and industry are promoted by the European Commission through "Integrating Activity" projects.

ESFRI - European Strategy Forum on Research Infrastructures



- Set up by the EU Council of Research Ministers **in 2002**: Representatives of Member States, Associated States, and of the European Commission
- To support the development of a **European policy for Research Infrastructures** and discuss a long term vision at European level
- Mandated by the EU Council of Research Ministers of November 2004 to develop a **strategic roadmap** identifying new pan-European Research Infrastructures or major up-grades to existing ones
- First Roadmap published in 2006, followed by three updates in 2008, 2010 and 2016: The latest Roadmap identifies 29 "**Landmarks**" and 21 "**Projects**".

ESFRI – Landmarks

- Health and Food

- **BBMRI** - Biobanks and Biomolecular Resources
(2006, bbmri-eric.eu)
- **EATRIS** - Translational Medicine facilities
(2006, www.eatris.eu)
- **ECRIN** - Clinical trial platform
(2006, www.ecrin.org)
- **ELIXIR** - Data repositories
(2006, www.elixir-europe.org)
- **INFRAFRONTIER** - Mouse archives and clinics
(2006, www.infrafrontier.eu)
- **INSTRUCT** - Structural biology facilities
(2006, www.structuralbiology.eu)

- Other (multidisciplinary)

- **PRACE** – High performance computing
(2006, www.prace-ri.eu)
- **SHARE-ERIC** – Survey of health, ageing and retirement
(2006, www.share-project.org)



eatris

European infrastructure
for translational medicine



ESFRI – Projects

• Health and Food

- **EMBRC** - Marine biology resources
(2008, www.embrc.eu)
- **ERINHA** - High-security labs
(2008, www.erinha.eu)
- **EU-OPENSREEN** - Chemical libraries
(2008, www.eu-openscreen.eu)
- **EUROBIOIMAGING** - Imaging facilities
(2008, www.eurobioimaging.eu)
- **ANAEE** – Experimentation on ecosystems
(2010, www.anaee.com)
- **ISBE** – Infrastructure for systems biology
(2010, project.isbe.eu)
- **MIRRI** – Microbial resources
(2010, www.mirri.org)
- **EMPHASIS** – Plant phenotyping
(2016, www.plant-phenotyping.org)



Integrating Activities - Networks of National Research Infrastructures

- **EU funded projects** under the H2020 "Excellent Science" pillar, Research Infrastructures programme.
- Projects aiming at **opening up** key national and regional research infrastructures to all European researchers from both academia and industry as well as ensuring their **optimal use and joint development**.
- Each project combines:
 - Networking activities
 - Joint research activities
 - **Trans-national access or virtual access activities**



EVAg
European Virus Archive goes Global

European Virus Archive goes global

Contact Us FAQs Login / Register

Search

HOME PORTAL THE PROJECT PARTNERS



EVAg - European Virus Archive goes global
www.european-virus-archive.com

Home
EVAg portal

Browse our catalogue of products

X- RESET FILTERS -X

Filter product categories

Search EVAg Product

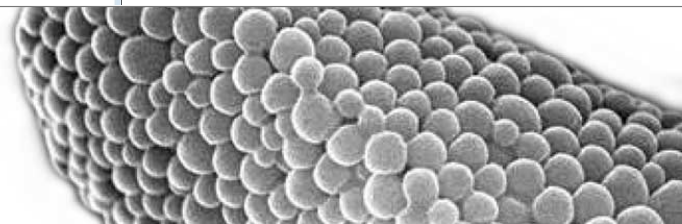
Using ICTV taxonomic term

Apply

Use any term of the virus lineage (combine with commas)

Virus (289)

Dengue Virus serotype 1,
strain Djibouti
D1/H/IMTSSA/98/060
(C6/36)



ABOUT US WORKING WITH US PARTNERS DOWNLOADS PUBLICATIONS SATELLITES

Search



Call for Proposals

The EUNCL provides critical **infrastructure** and characterisation services to physical and chemical attributes, their in vitro biological properties, and the models. The EU-NCL objective is to support and facilitate the regulatory review intended for innovative therapies and diagnostics.

EUNCL - European Nanomedicine Characterization Laboratory
www.euncl.eu



Search



About Access Training Teams News Partners Industry Contact

User Dashboard

Submit Proposal

iNEXT - Infrastructure for NMR, EM and X-ray crystallography for translational research
www.inext-eu.org



Access

- iNEXT offers access through three different access themes and specific modalities through a peer-reviewed process (at the bottom of the page is a table with reviewers).

in Join our network

Research Infrastructures web-page



The screenshot shows the 'RESEARCH & INNOVATION Infrastructures' web-page. The page features a navigation menu on the left with links to HOME, WHAT ARE RIs?, MAPS of RIs, THE EUROPEAN LANDSCAPE, EU FINANCIAL SUPPORT, ERIC-LEGAL FRAMEWORK, SYNERGIES - EU INITIATIVES, INTERNATIONAL COOPERATION, and ESFRI. Below these are sections for 'Press corner', 'Events', 'Funded projects', 'Success Stories', and 'Publications'. A 'Quick Links' section includes links to ESFRI, ERA, and RI in Horizon 2020. The main content area is titled 'Networks of National Research Infrastructures' and includes a search bar, a 'Display:' dropdown set to 'Map', and a 'Filter' button. The central element is an interactive map of Europe showing various research infrastructures as colored circles. A legend at the bottom identifies the colors: Energy (light blue), Information Communication Technologies (red), Physical Sciences and Astronomy (dark red), Engineering (dark blue), Life sciences (orange), Social sciences and Humanities (light orange), Environmental Sciences (green), and Material sciences and Analytical Facilities (grey). The map includes a scale bar (0-500 km) and a 'Full screen' button. The page footer shows a zoom level of 100% and a 'YOUR FEEDBACK' button on the right.

http://ec.europa.eu/research/infrastructures/index_en.cfm?pg=maps

Key messages

- You are encouraged to make usage of existing European research infrastructures.
- You can benefit from some EU-funded access opportunities to existing research infrastructures.
- You should also plan for the long-term data curation and preservation early on, in relation to existing research data infrastructures.

Thank you!

jean-emmanuel.faure@ec.europa.eu

<http://ec.europa.eu/research/health>

<http://ec.europa.eu/research/infrastructures>

<http://ec.europa.eu/programmes/horizon2020>